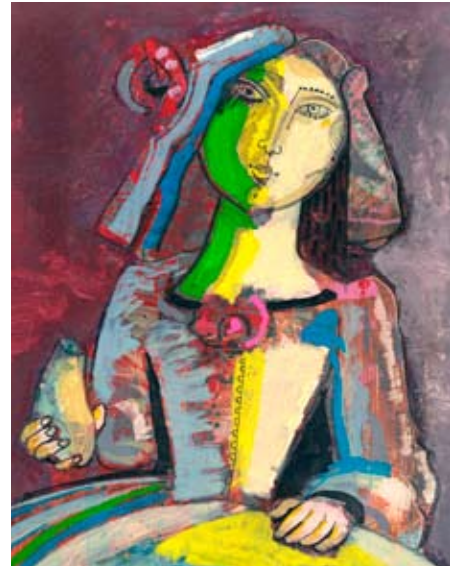
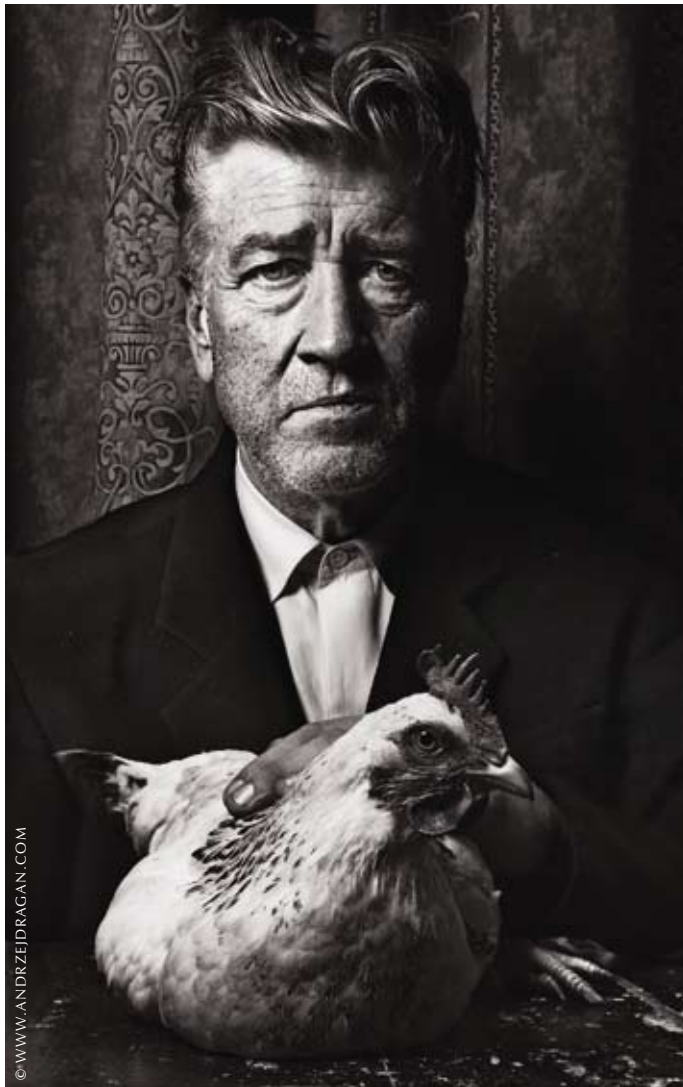


# The Digital FineArt Collection

InkJet artist papers for fine art photography, digital art, photo and art reproduction





## FOR ORIGINALS



"A work of art arises from the perfect balance between the conceivable and the inconceivable. The motive, the photographer, the moment and the material merge into something unique. The fine art papers by Hahnemühle play an important role in this creative process." (Andrzej Dragan)

The Digital FineArt Collection includes exclusive fine art papers with an exquisite feel and fascinating optics for the inkjet print. Thanks to our fine paper, brilliant black and white photographs or subtle colour pictures magically highlight the individuality of their motives. For more FineArt visit [www.hahnemuehle.com](http://www.hahnemuehle.com)

# The Art of Expression since 1584

Hahnemühle FineArt – Germany's oldest artist paper mill – has been making artist papers for traditional painting and printing techniques for more than 425 years. The Digital FineArt Collection combines the elegance and uniqueness of genuine artist papers with the impressive look of modern FineArt prints.



The range includes papers and canvas in a variety of weights and surface textures. Photographers and artists use the genuine mould-made, cotton and alpha-cellulose fibre papers treated with a premium inkjet coating for exclusive photographic and digital artworks as well as painting and photo reproductions. This is an impressive way to combine the precision of digital print media with the wonderful charm and feel of traditional FineArt papers. By working closely with leading inkjet printer manufacturers we can ensure that the papers, technology and inks are optimally coordinated. Hahnemühle FineArt inkjet papers and canvas are acid-free and extremely age-resistant. Multiple awards by TIPA, BIPP and American Photo confirm the outstanding quality of our products.



The Digital FineArt collection is divided into three categories: **Matt FineArt** - artist papers with matt surfaces in smooth and textured finishes, **Glossy FineArt** - artist papers with a glossy finish and **Canvas FineArt** - canvas made from cotton or poly-cotton.



## Photo Rag®

188 · 308 · 460 gsm · 100% Cotton · white

Photo Rag® is the most popular paper chosen by photographers to create high quality fine art prints. The fine, smooth surface and feel of Photo Rag® make this paper very versatile and it is ideal for printing both black and white and colour photographs and art reproductions with impressive pictorial depth.



## Natural Art Duo

256 gsm · 100% α-Cellulose · natural white

Natural Art Duo is printable on both sides and the ideal medium for portfolios and photo albums. Using this finely textured paper the prints acquire a completely new sensuous feel compared with standard high gloss photos. Warm tints and grey tones come into their own with this paper.



## Photo Rag® Duo

276 gsm · 100% Cotton · white

Photo Rag® Duo is printable on both sides in proven Photo Rag® quality. Ideal for portfolios and photo albums.



## Bamboo

290 gsm · 90% Bamboo fibre · 10% Cotton · natural white

Bamboo is the world's first digital fine art inkjet paper made from bamboo fibres. Bamboo represents spirituality, naturalness and resource-saving paper production. Particularly suitable for warm-toned colour and monochrome prints, Bamboo really highlights the sensuality of images.



## Photo Rag® Ultra Smooth

305 gsm · 100% Cotton · white

With its extra smooth surface Photo Rag® Ultra Smooth is particularly interesting for users who want proven Photo Rag® quality but with less texture and a brighter white point.



## Photo Rag® Bright White

310 gsm · 100% Cotton · bright white

Photo Rag® Bright White is the first choice for all users who prefer an especially bright white cotton paper. Photo Rag® Bright White is ideal for reproducing high contrast images.



Stonehenge Panoramic. Photograph by Stephen Johnson. Copyright © 1996 by Stephen Johnson. All rights reserved worldwide. www.sjphoto.com

## William Turner

190 · 310 gsm · 100% Cotton · white · mould-made

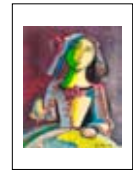
With its matt watercolour texture this paper is a genuine mould-made paper in both look and feel. William Turner is ideal for reproductions of traditional artworks and also for striking and expressive photo reproductions.



## Albrecht Dürer

210 gsm · 50% Cotton · 50%  $\alpha$ -Cellulose · white · mould-made

This traditional mould-made watercolour paper lends an artistic feel to art reproductions and photographs.



## Torchon

285 gsm · 100%  $\alpha$ -Cellulose · bright white

The term "torchon" is taken from the French and means "coarse structure". The special surface texture of this bright white paper is a reminder of this. It can capture the timeless original beauty and three dimensionality of an artwork in its own special way.



## Sugar Cane

300 gsm · 75% Bagasse fibre · 25% Cotton · natural white

Hahnemühle Sugar Cane combines the high standards of a FineArt inkjet paper with responsible use of raw materials. A "bagasse" pulp is used that is a by-product of raw sugar production. The cotton portion is made from recycling our own paper waste. Displaying the fine texture of a pastel paper Sugar Cane lends every image an artistic look and feel.



## German Etching

310 gsm · 100%  $\alpha$ -Cellulose · white · mould-made

This heavyweight etching board is velvety smooth with a fine surface texture. German Etching is one of the most popular media worldwide for artwork and photography.



## Museum Etching

350 gsm · 100% Cotton · natural white · mould-made

The luxurious texture of a traditional etching board and the natural white point make Museum Etching the ideal medium for images with soft tints or fine grey nuances.



## FineArt Pearl

285 gsm · 100%  $\alpha$ -Cellulose · bright white · pearl-finish

The bright white of FineArt Pearl enables impressive contrasts and pictorial depth in black and white or colour photography. The special coating provides a pearl-finish.



## Photo Rag® Satin

310 gsm · 100% Cotton · white · satin-finish

Photo Rag® Satin bestows fine art reproductions and photographs with a soft sheen. It renders mirror and gloss effects particularly well. The unprinted areas remain matt.



## Photo Rag® Baryta

315 gsm · 100% Cotton · white · high-gloss

Photo Rag® Baryta combines the virtues of a luxury cotton paper and a traditional baryta board. The very fine surface texture with the baryta gloss endows portraits with a particularly expressive character.



## Photo Rag® Pearl

320 gsm · 100% Cotton · natural white · pearl-finish

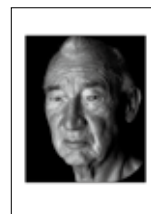
Photo Rag® Pearl has a smooth, uniform surface texture with the unique pearl coating. It is especially suitable for photography and art reproduction with warm grey and colour tones.



## FineArt Baryta

325 gsm · 100%  $\alpha$ -Cellulose · bright white · high-gloss

FineArt Baryta is a paper that sets the benchmark for high colour depth, large colour gamut and image definition. This paper gives the “wow” factor particularly to black and white prints with an extremely high dmax and the finest grey tones. Using barium sulphate in the premium inkjet coating ensures the typical gloss that makes this paper a genuine replacement for traditional Baryta papers from analogue laboratories.



## Canvas Artist

340 gsm · Poly-Cotton · natural white

Canvas Artist has an appreciable linen structure with a matt coating. This inkjet coating guarantees excellent image definition and colour graduation.



## Goya Canvas

340 gsm · Poly-Cotton · natural white · satin-finish

Goya Canvas is the new name for Canvas Satin, 340 gsm. The canvas texture brings an added dimension to the image. The satin coating gives a brilliant satin-finish.



## Daguerre Canvas

400 gsm · Poly-Cotton · bright white

Daguerre Canvas offers a fine structure which is particularly good for fine art photo printing. Its bright white point provides clear fresh colours and contrasts for black and white reproductions. The A3 format, which is available in 20 sheet boxes, is ideal for stretching canvas of 8x10".



## Monet Canvas

410 gsm · 100% Cotton · white

Monet Canvas is a heavy cotton canvas with a woven pattern. Its natural white colour is perfect for art reproduction, but also works well for high quality photo printing. Monet Canvas is also available in A3 format in 20 sheet boxes.



## Individual photo presentations with printable albums

### FineArt Inkjet Leather Albums

Photo Rag® Duo, 276 gsm

These luxury albums with a leather cover are available in A4 and A3 landscape format and also in a square format (12 x 12"). They are excellent for creating professional portfolios, high quality presentations, limited edition booklets and much, much more. Each album contains 20 sheets of Photo Rag® Duo double-sided paper and 22 sheets interleaf paper to protect the individual fine art prints. The luxury Photo Rag® paper is made of 100% cotton and with its double-sided premium coating guarantees brilliant, high contrast, and above all, long-lasting fine art photo prints. Photo Rag® is the first choice of fineart photographers worldwide.

Refill packs are available.



### FineArt Inkjet Photo Albums in Black and Silver

Natural Art Duo, 256 gsm

These hardcover albums in black and silver contain 20 sheets of Natural Art Duo 256 gsm double-sided paper and 22 sheets interleaf paper. The professional screw post albums enable the user to create individual layouts using a computer. The natural white sheets with a fine, matt surface are available in A4 and A3 landscape size. The Hahnemühle FineArt paper, coated for inkjet printing, guarantees photographic artwork that is both visually and tangibly striking, and above all, long lasting.

Refill packs are available.



### Hahnemühle Protective Spray

The Hahnemühle protective spray offers incredible protection for valuable ink-based images. Available as an aerosol spray it seals printed surfaces and protects them from dirt, fingerprints and moisture. It increases water-resistance and significantly improves the light fastness of the inks used without altering the surface texture.



### Certificate of Authenticity

The Hahnemühle Certificate of Authenticity was designed to protect the security and genuineness of limited edition artworks and reproductions on Hahnemühle paper and to reduce the risk of forgery.

Each certificate is made of premium deckle edged mould-made paper with a Hahnemühle watermark and fluorescent security fibres. A serialized numbered hologram should be added. A second, identically numbered hologram should then be applied to the reverse side of the artwork.

The combination of certificate and hologram assures that each Certificate of Authenticity relates to one particular piece of art.

[www.myartregistry.com](http://www.myartregistry.com) offers artists and photographers the option to register their artwork.



### Gallerie Wraps

Hahnemühle is now introducing a do-it-yourself gallerie wrap kit for paper and canvas. Artists can take their original art works or fine art images printed on Hahnemühle media and mount them quickly and easily on a frame.

„Gallerie Wraps“ include self-adhesive stretching bars, tensioners and holding pins. The stretching bars are available in two different versions. The matching „corner set“ with re-usable positioning corners and archival glue for multiple frames enables easy assembly in a matter of minutes with no special tools needed.



## Matt FineArt - smooth

	*Photo Rag®	Natural Art Duo	Photo Rag® Duo	Bamboo	Photo Rag® Ultra Smooth	Photo Rag® Bright White
<b>Rolls</b>						
17"x12m	●			●	●	●
24"x12m	●			●	●	●
36"x12m	●			●	●	●
44"x12m	●			●	●	●
60"x12m					●	
64"x12m					●	
<b>10 sheets</b>						
DIN A4				●	●	
<b>20 sheets</b>						
DIN A2	●	●	●	●	●	●
DIN A3+	●	●	●	●	●	●
DIN A3	●	●	●	●	●	●
DIN A4	●	●	●	●	●	●
<b>50 sheets</b>						
DIN A2	●					●
DIN A3+	●					●
DIN A3	●					●
DIN A4	●					●

## Matt FineArt - textured

	William Turner	Albrecht Dürer	Torchon	Sugar Cane	*German Etching	Museum Etching
<b>Rolls</b>						
17"x12m	●	●	●	●	●	●
24"x12m	●	●	●	●	●	●
36"x12m	●	●	●	●	●	●
44"x12m	●	●	●	●	●	●
60"x12m						
64"x12m						
<b>10 sheets</b>						
DIN A4	●	●		●	●	
<b>20 sheets</b>						
DIN A2	●	●	●	●	●	●
DIN A3+	●	●	●	●	●	●
DIN A3	●	●	●	●	●	●
DIN A4	●	●	●	●	●	●
<b>50 sheets</b>						
DIN A2	●				●	
DIN A3+	●				●	
DIN A3	●				●	
DIN A4	●				●	

\*Photo Rag® and German Etching are also available in the following sizes: 36"x20m, 44"x20m, 889x1188mm

## Glossy FineArt

	FineArt Pearl	Photo Rag® Satin	Photo Rag® Baryta	Photo Rag® Pearl	FineArt Baryta
<b>Rolls</b>					
17"x12m	●	●	●	●	●
24"x12m	●	●	●	●	●
36"x12m	●	●	●	●	●
44"x12m	●	●	●	●	●
60"x12m	●		●		●
64"x12m	●		●		●
<b>10 sheets</b>					
DIN A4				●	●
<b>20 sheets</b>					
DIN A2	●	●	●	●	●
DIN A3+	●	●	●	●	●
DIN A3	●	●	●	●	●
DIN A4	●	●	●	●	●
<b>50 sheets</b>					
DIN A2	●		●	●	●
DIN A3+	●		●	●	●
DIN A3	●		●	●	●
DIN A4	●		●	●	●

## Canvas FineArt

	*Canvas Artist	Goya Canvas	Monet Canvas	Daguerre Canvas
<b>Rolls</b>				
17"x12m	●	●	●	●
24"x12m	●	●	●	●
36"x12m	●	●	●	●
44"x12m	●	●	●	●
60"x12m				
64"x12m				
<b>10 sheets</b>				
DIN A4			●	
<b>20 sheets</b>				
DIN A2				
DIN A3+				
DIN A3			●	●
DIN A4				
<b>50 sheets</b>				
DIN A2				
DIN A3+				
DIN A3				
DIN A4				

\*Canvas Artist is also available in the following size: 50"x12m



## Green Rooster – Hahnemühle’s Green Side

The red rooster is our well known trademark – the green rooster signifies our environmental awareness. On the [www.green-rooster.com](http://www.green-rooster.com) website we document our commitment to the environment. As a paper manufacturer sustainability and ecology are not just buzzwords – we live them.



For more than 425 years we have been using pure spring water to manufacture our papers. The cellulose or cotton fibres are derived from sustainable production. The Bamboo and Sugar Cane papers are manufactured in a particularly eco-friendly way: from highly renewable bamboo grass and by utilizing the fibres which remain when the sugar has been extracted from the sugar cane plant. Since the beginning of 2009 we use only renewable green electricity for our paper production.



We regularly donate a portion of the proceeds from selected papers to support environmental projects. You can find out more by visiting our green website: [www.green-rooster.com](http://www.green-rooster.com).